

Citi Wealth

Sustainable Investing

A Primer



INVESTMENT PRODUCTS: NOT FDIC INSURED • NOT CDIC INSURED
• NOT GOVERNMENT INSURED • NO BANK GUARANTEE • MAY LOSE VALUE



Private investors are uniquely positioned to address sustainability challenges: they are willing to be patient and are driven by passion.”

Harlin Singh

Head of Sustainable Investing
at Citi Wealth



Table of contents

- 5 Pragmatic optimism
- 7 The evolution of sustainable investing
- 11 Socially responsible investing: Exclusionary screening
- 13 ESG integration: How companies operate matters
- 17 Thematic investing: Businesses that offer solutions to sustainability challenges
- 21 Impact investing: Intentional, incremental and measurable outcomes
- 23 Building a sustainable investing strategy
- 27 Looking ahead
- 28 Important information

Planetary health
and human health
are intimately
interconnected –
by improving one we
improve the other.



Pragmatic optimism

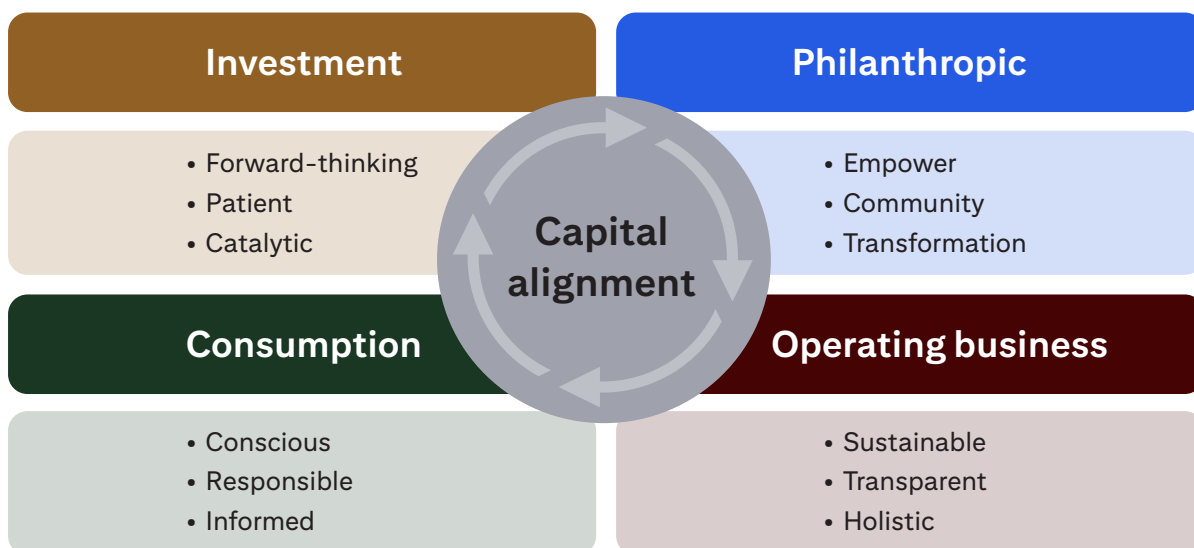
Sustainability – the capacity to meet present needs without compromising the ability of future generations to meet their own needs¹ – has emerged as a key element in certain decisions every day. For many pragmatic optimists, sustainability is synonymous with addressing the many impacts of climate change. Prolonged droughts, surging temperatures, and more intense wildfires affect people across all regions. While the scope of climate challenge might seem daunting, numerous innovations and policies that prioritize natural capital, circular business models, and a more efficient, cleaner energy system are emerging.

But that is only one side of the coin. The flipside is social progress and recognizing the power of capital to address market failures in providing adequate, affordable, and accessible solutions in healthcare, education, clean water, sanitation, and food. It is investing in a world that works for over eight billion people and preserves the health of the planet. Planetary health and human health are intimately interconnected – by improving one we improve the other. From affordable housing to clean oceans to soil health, there is something for everyone.

By actively seeking opportunities that prioritize environmental and social issues, investors can channel capital into supporting and potentially profiting from ingenious solutions to some of the world’s most pressing challenges.

Aligning capital with purpose

Numerous individuals aim to align their various pools of capital with their worldview and sustainability objectives.



By simultaneously harnessing their purchasing power, philanthropic giving, investments, and operating business(es), they are making a difference on priority issues while avoiding potential conflicts. Each pool of capital serves a critical function in creating positive change, improving economies, and financing self-sustaining business to achieve economies of scale.

¹ [Definition of Sustainability by the United Nations Brundtland Commission](#)



Investor thinking on sustainable investing and returns has changed over time

Ethical and socially responsible investing

- **1700s onward:** Sustainable investments reflect clients' religious views
- **1970s and 1980s:** Growth of ethical investment and divestment, frequently referred to as socially responsible investing (SRI)

Rise of sustainable investing for returns

- **1990s and 2000s:** Academic and professional research challenges view that sustainability negatively impacts returns
- A growing awareness of how corporate social responsibility and practices related to social and environmental capital affect performance

² World Economic Forum, UN PRI, World Bank, Brookings Institution, Aspen Institute and others.

Source: Citi Global Wealth Investments as of December 2024.

The evolution of sustainable investing

During the 1700s, religious groups actively avoided investments in activities that contradicted their values. In more recent times, the oil crisis of 1973, anti-war movements, and apartheid in South Africa influenced the adoption of an exclusionary approach to investing. These efforts highlighted the potential draw of focusing on a broader investment objective.

Today, many investors proactively integrate sustainability factors beyond negative screening into their decision making processes. A deeper understanding of the link between sustainability and financial performance drives this approach. Sustainable investing is increasingly seen as recognizing the interconnectedness of economic prosperity, environmental health, and social well-being. What was once regarded as niche is now front and center for many investors. It is a lens that can be applied to almost any sector, it is forward-looking, and inclusive, making it highly relevant in today's world.

What is sustainable investing?

Sustainable investing can empower investors who seek to:

- Reflect their values and worldview in their investment process
- Mitigate investment risks associated with environmental, social and governmental (ESG) issues
- Access the competitive returns sustainably operated companies may generate over time
- Gain investment exposure to the innovations that drive progress
- Generate incremental impact in the world

Increasingly, a growing universe of investors seek all the above simultaneously.

The term “sustainable investing” is a collective descriptor for a range of approaches. Each of these has its own financial and sustainability objectives and can be applied across traditional and alternative asset classes.

At Citi Wealth, we identify four main approaches in this area – socially responsible investing (SRI), ESG integration, thematic investing, and impact investing. These approaches are not mutually exclusive. A single investment strategy can combine some or all of them, targeting exposure according to an investor's priorities.

Integration and fiduciary duty

- **2000s and 2010s:** Financial industry begins to integrate environmental, social and governance (ESG) issues into valuations and strives to quantify financially material ESG contributions to long-term performance
- The importance of sustainable investing starts to gain traction as a fiduciary duty

Impact, outcomes and engagement

- **Late 2010s onward:** Financial institutions seek to invest for impact and align with social and environmental outcomes, both to reflect client preferences and growing body of research from economic think tanks and academia²
- Investors and investment managers actively engage with companies to drive sustainability objectives

Socially responsible investing (SRI), refers to excluding sectors or companies from portfolios based on ethical or moral considerations. Common examples are tobacco, fossil fuels, and weapons.

ESG integration seeks to identify investments with a potentially attractive risk and return profile by assessing the ESG characteristics of each opportunity. Portfolio managers may also engage with each portfolio company's leadership to help influence its policies and business practices, in relation to the management of sustainability issues.

Thematic investments are based around certain sustainability themes, such as access to affordable healthcare, the energy transition, or the circular economy. Investments are made in sets of companies or projects that target specific issues or derive revenue from solutions that address sustainability challenges.

Impact investments seek a potential financial return alongside a measurable, intentional, and incremental impact in one or more environmental or social areas.

Can a sustainable investing strategy be profitable?

A common misconception about sustainable investing is that it requires the investor to forego some financial return compared to traditional investments. However, incorporating ESG metrics in investment decision-making may potentially improve the risk-reward potential. Additionally, investing in long-term trends such as the energy transition and affordable healthcare can provide investors with opportunities to participate in sectors that are meeting demand for basic human needs.

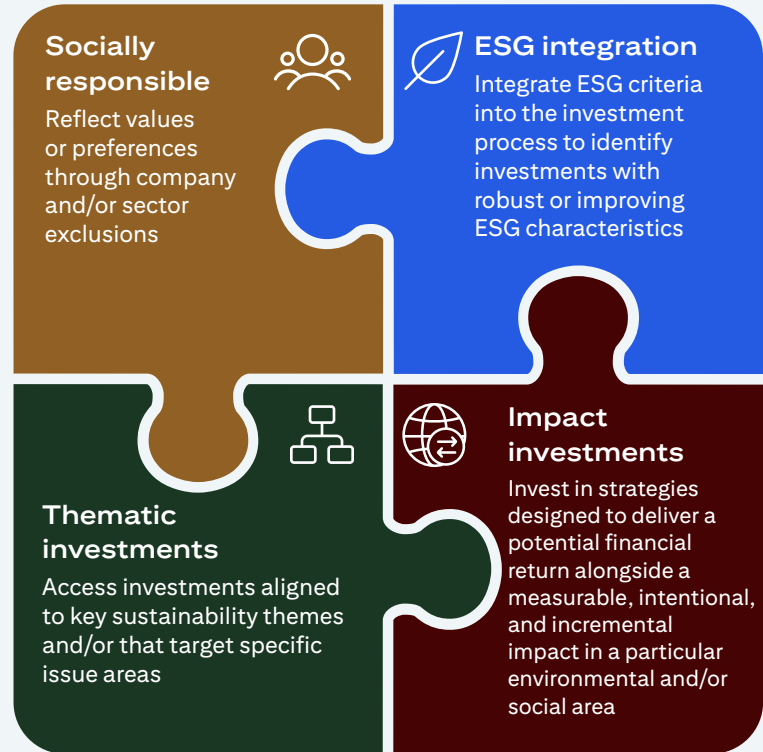
Sustainability can serve both as a competitive advantage and a source of risk mitigation. Integrating ESG considerations can provide a more complete analysis of the challenges and opportunities facing a company or a project. This can potentially help identify stronger risk-adjusted return opportunities, creating greater value for society and the investor. Reported and extrapolated ESG data from third party vendors combined with fundamental analysis is increasingly a feature of leading investment managers' investment selection process, irrespective of their industry specialty.

“Increasing awareness of the benefits of sustainable investment – including holistic risk management, diverse investment opportunities, and potential outperformance – is encouraging clients to combine financial and sustainability goals.”

Catherine Turullols

Sustainable Investing Specialist
for North America at Citi Wealth

A range of approaches to consider across your investment portfolio



Numerous studies analyzing the relationship between sustainable investment and financial performance, such as a report by the NYU Stern Center for Sustainable Business, have found that sustainability initiatives including low-carbon future planning, improved innovation, and ESG-related risk management help to drive corporate financial performance. Moreover, the report concluded that sustainable investments provided potential downside protection, especially during a social or economic crisis.³ Like traditional investments, each sustainable investment strategy is distinct, with varying financial results and risk profiles based on asset class and investment objectives.

It is important to note that an investment strategy's utilization of screens and other exclusionary tools to meet its sustainability objectives may affect its performance relative to its benchmark or the market as a whole because of these limitations. The performance

of managers in this space may differ relative to the performance of other managers that employ similar strategies but do not expressly incorporate sustainability criteria into their investment strategy, or the stock market generally. For example, strategies that integrate ESG criteria can be limited in the type and number of investment opportunities available, or the ESG criteria can cause a portfolio manager to avoid a well-performing security or sector. Investing on the basis of ESG criteria is generally qualitative and subjective by nature. There is no guarantee that any of the determinations or investments made by an adviser will align with the values of a particular investor or will result in better performance. Due to their narrow focus, investments in sustainability related themes and sub-themes can be more volatile than, and underperform, other more diversified strategies and the stock market generally.

³ [New Meta-Analysis from NYU Stern Center for Sustainable Business and Rockefeller Asset Management Finds ESG Drivers Better Financial Performance](#)

Investing in the energy transition

In 2023, clean energy, power infrastructure, and energy efficiency investments hit \$1.77 trillion⁴. By contrast, the equivalent for fossil fuels sat just below pre-pandemic levels at slightly more than \$1 trillion, according to the International Energy Agency⁴. The growing energy transition investment trend is in force despite challenges such as tumultuous supply chain logistics, macroeconomic instability, monetary policy, and energy market volatility. The demands of the energy transition, energy security and economic growth and development, must be tackled simultaneously.

Total 2023 energy transition investments were double the level of just three years earlier. This surge has been dominated by the two highest-growth commercial technologies: renewable energy and electric vehicles. See Sustainable Investing Spotlight: [New Energy Horizon](#).

Various possibilities exist for investors to participate in the energy transition. One approach is seeking exposure to public companies that are enhancing their efficiency. Boosting energy efficiency is a cost-effective way to improve competitiveness. Moreover, many companies are exploring new solutions that can deliver clean, reliable, and affordable sources of energy. Another approach is to look for companies that are generating revenues by scaling a new technology along the energy value chain. Green bonds can also be a helpful component of an investor's fixed income allocation while helping to finance innovation in energy transition and efficiency.

Understanding the energy transition and other sustainability trends, in the context of your investment portfolio, can help uncover potential opportunities and help mitigate risks.

⁴ IEA (2023), Global Energy Transition Stocktake 2023, IEA, Paris <https://www.iea.org/topics/global-energy-transitions-stocktake>, CC BY 4.0



Socially responsible investing: Exclusionary screening

Sustainable investing is rooted in ethically and socially responsible investing, an approach which imposes a set of values or preferences to exclude exposure to certain companies or sectors. Traditionally, religious organizations or individuals have sought to avoid “sin stocks,” securities linked to tobacco, pornography, gambling, or weaponry. Spurred by environmental concerns and the shift toward renewable energy, socially responsible investing has evolved to exclude carbon-intensive sectors and businesses as well as the producers and refiners of coal, oil, and natural gas.

With an exclusionary approach, it is important to recognize how much exclusions may impact a portfolio. For example, they may result in a higher tracking error, i.e., the difference between the portfolio’s performance and that of its benchmark or market index. They may also lead to unintended factor exposure, where the portfolio becomes more correlated to, say, interest rate movements or security price changes in a certain industry.

Limiting the type and/or number of investments in a portfolio – a natural consequence of an exclusionary approach – may affect performance compared to unrestricted approaches. Moreover, when investors exclude or divest certain types of investments, they relinquish the possibility of actively engaging with those companies and influencing their sustainability practices for the better.



ESG integration: How companies operate matters

Every company – regardless of industry or sector – has ESG characteristics arising from its day-to-day operations that are financially material. More so than ever, companies are aware of the challenges that society faces and their role in addressing them. An ESG integration approach may seek out companies whose positive or improving ESG attributes positions them to potentially deliver competitive risk-adjusted returns over time.

Reported and extrapolated ESG data from company reports and third-party ESG ratings providers are increasingly deployed in investment selection, as investors seek to understand a company’s sustainability footprint. Reporting standards such as those of the Sustainability Accounting Standards Board (SASB) Standards and The International Sustainability Standards Board (ISSB) aim to provide information that supports investment decision-making and enables international comparability.

Sample of ESG operational considerations



E: ENVIRONMENTAL	S: SOCIAL	G: GOVERNANCE
Businesses have a two-way relationship with the natural world, and corporations should assess both their dependencies and impacts accordingly. For instance, the use of forest-risk commodities – including palm oil, timber and pulp, and ranches cattle – is both a dependency and has an impact on nature that presents business risks.	Transparent and traceable supply chains help uncover issues, including unethical buying practices, modern slavery and unfair wage practices.	Unethical and illegal business practices can expose companies to regulatory fines, legal actions, and a large swathe of additional risks. Having diverse boards and management teams has been associated with better corporate performance, meanwhile.

“There is no single path to building a sustainable investing portfolio. Investors may chart their own course toward understanding, designing, and executing an approach that is appropriate to their unique goals, preferences, and resources.”

Janet Shum

Sustainable Investing Specialist
for Asia Pacific at Citi Wealth

There are over 600 ESG ratings agencies and data providers globally,⁵ each with its own methodology. Because they are largely subjective, the correlation between ESG data providers’ ratings is quite low, at around 60%.⁵ This complicates attempts to make standardized comparisons between companies based on ESG scores alone. As such, portfolio managers may combine third-party ratings, proprietary data, and fundamental analysis to mitigate the risk of overreliance on a single ESG ratings provider. Regulations and codes of conduct for ESG ratings and data providers have also emerged in various jurisdictions, aiming to enhance transparency, quality, and reliability of ESG ratings and data.

In public equity markets, investors also have the option of casting their proxy votes in favor of environmentally and socially aligned initiatives that aim to mitigate financial risks from rapidly shifting policies or a changing climate. Alternatively, they may have a portfolio manager that casts proxy votes on their behalf and directly engages with company leaders to influence proposals, strategy, and policy.

Suitable and qualified investors might explore private equity, private credit, direct investments, or venture capital to further accelerate a company’s growth and impact. Asset managers may take board seats on portfolio companies to offer expertise and guidance on implementing climate or social policies within their business practices.

⁵ Source: [ESG Ratings: A Call for Greater Transparency and Precision](#)

Food security



Global food insecurity has increased following a series of geopolitical shocks, including the COVID-19 pandemic, and Russia's invasion of Ukraine. Concerns have also been compounded by the effects of climate change and increasing evidence of damage from accelerating biodiversity loss and water scarcity. Amid concerns about immediate and long-term food security, agriculture policies are caught in the crossfire between short-term food security and sustainability - see Sustainable Investing Spotlight: [Planting for tomorrow – Weaving sustainability into the path toward food security](#).

The challenge of sustaining a growing population without depleting our planet's resources is generating investable innovations in food systems spanning technology, infrastructure, and science. Some of the innovations, including feed that reduces emissions from livestock, cultivated meat produced from animal cells, and genetically modified crops that contain higher levels of antioxidants, could well prove revolutionary.

Many innovations target the need to reduce environmental impact within the existing structure by employing a precision farming

approach to enable data-driven decisions, monitor crop health, and target inputs such as fertilizers, pesticides, and water, more effectively. Global positioning system (GPS), AI-driven software, and testing technology help maximize crop yield while reducing waste and harmful environmental effects.

Understanding sustainability trends may assist in the pursuit of returns and risk mitigation. Such trends may create potential opportunities in companies with a commitment to environmental stewardship, ethical sourcing, animal welfare, and social responsibility. Those firms may be positioned to outperform or be more resilient than their peers.

Investing in companies that are addressing today's global challenges, such as food production, can potentially uncover value and have a ripple effect. It can contribute to progress in various other interconnected areas. For example, mitigating the use of environmentally unfriendly fertilizers and pesticides can help keep fresh water sources safe. Regenerative agriculture practices such as these can reinvigorate soil health, resulting in a healthier ecosystem and increased biodiversity.



The UN SDGs highlight areas that require concerted action by stakeholders across society, such as clean energy, sustainable food production, and affordable housing.

Thematic investing: Businesses that offer solutions to sustainability challenges

Investors are increasingly directing capital toward companies that offer products and services that address sustainability challenges and create value. The need for solutions that will contribute to a healthier planet and society is generating investable innovations across technology, infrastructure, and science. The challenge is even more urgent given long-term forces such as population growth, with the number of people globally predicted to rise from around 8 billion today to nearly 10 billion in 2050.⁶

Some of the innovations and projects are targeting increased supplies of water that is drinkable or safe for agricultural use, environmental protection, cheaper and more efficient renewable energy, and provision of healthcare, nutrition, and education to those who lack it.

Sustainable investing themes

Sustainable thematic investing directs capital to companies that derive their revenue from creating solutions to address sociopolitical, environmental, and equity-related problems. The individual themes often map to the United Nations 17 Sustainable Development Goals (UN SDGs). The UN SDGs highlight areas that require concerted action by stakeholders across society, such as clean energy, sustainable food production, and affordable housing.

Investing in sustainable thematic strategies creates the potential to align portfolio holdings with an individual's worldview, while capitalizing on innovations that drive both sustainable development and financial returns.

Sustainable thematic investing directs capital to companies that derive their revenue from creating solutions to address sociopolitical, environmental, and equity-related problems.

⁶Source: United Nations Population Fund Data

Citi Wealth Sustainable Investment Themes

We share below Citi Wealth's core sustainable investment themes that we believe combine growth and the potential to enhance shared prosperity for the planet and people.

Theme	Sub-theme
Investing in climate solutions Invest in companies that are creating transformative solutions that will enable clean energy transition, decarbonization and climate resilience.	Climate change mitigation and adaptation Energy transition Resource efficiency Sustainable infrastructure Carbon credits
Preserving natural capital Invest in nature-positive solutions spanning multiple areas that address pollution and help conservation.	Conservation and restoration of ecosystems, e.g., ocean health Fostering biodiversity Circular economy Pollution prevention and reduction Regenerative agriculture Sustainable land and water use
Improving quality of life Invest in companies that prioritize policies, services and technologies seeking to enhance the overall wellbeing of internal and external stakeholders.	Affordable healthcare Affordable housing Clean water and sanitation Energy security Food security
Fostering fair and inclusive growth Invest in solutions for creating a society where opportunities and benefits are distributed equitably among diverse populations and contribute to more sustainable long-term growth.	Just transition Financial inclusion Cybersecurity Affordable education Inclusive artificial intelligence Smart cities Workforce development

These themes serve as a roadmap for investors seeking to drive change, helping them to identify where their capital may make the most meaningful impact, be it addressing inequalities, creating meaningful jobs, ensuring access to quality education, and much more. The themes are interrelated and can help guide development of a portfolio allocation that has diversified sources of return and potential impact. At the same time, there may be complementary features. Investments in energy transition, for example, can directly increase opportunities across biodiversity, clean water and sanitation, and food security.

Various options are available for investors to participate in sustainability-related themes. One approach is to look for companies that are generating revenues by scaling a new product or service that contributes to sustainable development. Examples might include satellite imaging that monitors environmental changes, educational platforms, or blockchain that increases supply chain transparency.

In addition, green bonds, social bonds, blue bonds, and sustainability bonds can be an integral component of an investor's fixed income allocation and help finance innovation in issue areas. Green and social bonds are issued to address environmental and societal challenges, respectively. Blue bonds aim to protect oceans and marine ecosystems. While sustainability bonds may address a combination of environmental and societal challenges.

Private market investors might explore alternative options such as private equity, private credit, direct investments, or venture capital to further accelerate companies' growth and sustainability impact. Such companies may be seeking to commercialize or scale a new product, technology, business model, such as low carbon heating systems and lower-emission vehicles. For example, you may want to consider investing in real estate projects that create affordable, workforce housing unlocking resources for food, education, and mental well-being.

One approach is to look for companies that are generating revenues by scaling a new product or service that contributes to sustainable development.



Impact investing: Intentional, incremental and measurable outcomes

Impact investors' aim is to generate a financial return simultaneously with an environmental and/or social return, the so-called "double" or even "triple bottom line." Investment mandates state such intent, priorities and goals as well as the target financial return. To be considered an impact investment, the sustainable outcome sought must be incremental, meaning it would not have occurred had capital not been allocated to the investment. The impact also needs to be measurable by quantitative metrics or demonstrated by qualitative evidence.

As to directly addressing sustainability challenges, private markets and fixed income offer significant opportunities to address funding gaps through financial innovation. They seek to make progress in both climate change mitigation technologies as well as funding adaptation to improve infrastructure resilience, food production, and societal polarization.

As to directly addressing sustainability challenges, private markets and fixed income offer significant opportunities to address funding gaps through financial innovation.

A dynamic duo: Donor-advised funds and sustainable investments



\$54.77
billion in 2023

grants from donor-advised
funds to charitable
organizations⁸

Looking at the global landscape, Donor-advised funds (DAFs) are a popular giving vehicle in the U.S. and are gaining traction in the U.K. and South Asia. In the U.S., grants from DAFs to charitable organizations totaled more than \$50 billion in each of the past two years⁷.

DAFs are one of the fastest growing charitable giving vehicles in many regions globally. DAFs offer a simplified approach to charitable giving and help to establish a philanthropic strategy with lasting impact for generations to come.

A donor makes an irrevocable charitable donation to a public charity that sponsors and administers DAF accounts on behalf of donors. The donor receives the immediate tax benefit based on the prevailing tax rules for the assets donated and retains the privilege to recommend how capital will be further deployed to qualified public charities.

Donors can also recommend how the charitable assets are invested before being deployed, where they can grow tax-free. Charitably inclined investors may choose to pursue a sustainable investment strategy aligned with their interests. A sustainable investing strategy may combine multiple sustainable investing approaches to help target exposure and generate outcomes specific to what resonates with you.

For donors wanting to invest in opportunities aligned with their societal interests, DAFs are an effective vehicle to champion a more holistic approach to philanthropic giving.

⁷ Source: National Philanthropic Trust. (2024) The 2024 DAF Report.

There can be no guarantee or assurance that the investment objectives will be achieved. Sustainable investment products are subject to availability. Certain sustainable investment opportunities may not be available in all regions, client segments, or not available at all. Not all products, analytics, and services are available to all clients in all regions.

Building a sustainable investing strategy

Set objectives

Each investor's journey is unique, so there is no universal formula for creating a sustainable investing strategy. Establishing clear goals at the outset helps to demarcate appropriate investments as well as setting criteria for measuring their progress over time.

The first step is to decide on the overall financial objective of the investment portfolio by establishing return expectations, risk tolerance, as well as liquidity, currency, and geographical preferences. The next step is to reflect on a sustainability objective.

For many investors there is one issue, trend, or impact area that matters most. Thematic areas ranging from climate solutions to social equity to food security can serve as an anchor when evaluating opportunities. Here are some questions to use as a guide:

- What is the one thing that you want to positively influence in society and why?
- Are there any sectors or companies that you would like to avoid?
- What outcomes are important to you? Are these outcomes regional or global?
- Is there an issue, trend, or impact area that matters most to you?
- Are there specific themes that you would like to explore within your portfolio, such as gender, clean water, or renewable energy?

At this stage, decide how much of the portfolio will be dedicated to sustainable investments. Will they comprise just a portion of the portfolio or will the full array of investments be placed under a sustainability lens?

Evaluating sustainable investments with multiple lenses

When seeking sustainable investment opportunities, it is key to be able to separate the wheat from the chaff. As sustainable investing has gained in popularity, so has the number of companies and organizations eager to play up the sustainable attributes of their business or investment opportunities.

This tactic, known as “greenwashing” or variations such as “social-washing”, “rainbow-washing” or “ESG competence-washing,” can take many forms. Examples of “washing” include omission of material information, provision of misleading information, and exaggeration of the sustainability credentials of a business or investment strategy.

Considering this risk, investors may be skeptical of investing in sustainable investment strategies. The Association of Investment Companies' ESG Attitudes Tracker found that 63% of private investors surveyed were concerned about greenwashing in 2023, up from 48% in 2021.⁸ Holistic evaluation with a balance of both breadth and depth is critical to mitigating greenwashing risks.

When analyzing investments that appear to be a good fit for a portfolio, emphasize the importance of transparency with a financial advisor and ensure thorough due diligence to avoid green- or equivalent “washing”. Evaluate the proposed holdings' alignment with your financial and sustainability objectives and be aware of any potential risks and exposure to sectors you may want to avoid.

As you peruse investment materials and attend related meetings and discussions, be wary of poorly defined or otherwise vague ESG terms, policies and promises. If the financial and ESG-related potential sound too good to be true they probably are. Insist on verifiable and empirical answers to questions.

⁸ [Financial Times: Fear of Greenwashing in ESG Investing has Grown](#)

During the assessment of current and prospective companies that describe themselves as “sustainable,” check that they are transparent about:

What a company does

Businesses in heavily sustainability-linked sectors such as healthcare may feel compelled to label themselves as “sustainable.” However, this may not always withstand scrutiny of their product or service offering. For example, while companies offering access to affordable quality healthcare services to underserved communities are typically classified as sustainable investments, those focusing purely on cosmetic benefits are not.

How a company does it

Businesses that are committed to strong sustainability practices identify material ESG factors that impact their operations and stakeholders, as well as develop a risk mitigation plan and set ambitious targets for growth and improvement. Often, these companies assess their operations’ day-to-day impact on the environment and community and take steps to prevent negative effects.

Here are a couple examples of how this may work:

1. An investor may be pursuing an environmentally-related goal such as financing renewable energy projects. This can be done through private investments that may require a long-term commitment or greater risk appetite. While this may be appropriate for some investors, others may seek out investments with shorter time horizons. These investors may choose to allocate the fixed income portion of their portfolio to green bonds whose proceeds go toward financing the energy transition.
2. An investor seeking to reduce the emissions associated with their portfolio may choose to avoid the fossil fuel sector. This could cause greater deviations from traditional benchmark performance due to the difference in sector composition. While this may be appropriate for a client who is not benchmark focused, an investor who is seeking performance in line with a traditional benchmark may instead choose a manager who owns fossil fuel companies with the lowest carbon emissions and actively engages with them to improve their environmental impact.

Applying a sustainability lens can uncover opportunities in companies that demonstrate a commitment to environmental stewardship, social responsibility, and robust governance with material financial impact. Over time, these practices may strengthen resiliency, positioning companies to outperform their peers. Opportunities in alternatives investments, hedge funds, private equity and real estate can round out an asset allocation.

In addition, many of the larger financial services firms are at the forefront of new and exciting initiatives to help finance disruptive innovation that seeks to transform our world for the better. Innovative structures, such as outcome bonds, offer investors the opportunity to mobilize private capital in support of projects with positive climate and development impacts.

Timely and systematic review of results

Even after selecting appropriate investments that incorporate the factors aligned to your preferences, it is vital to monitor their ongoing performance relative to your financial and sustainability goals. Conduct periodic and systematic assessments, including a review of impact or progress reports from the investment managers. This is to ensure that your portfolio remains aligned with your objectives.

Philanthropic alignment

You may also apportion some of your capital to investments that place a higher value on social or environmental impact than on financial returns. This often takes the form of a philanthropic donation, revocable grants, donor-advised funds, and program-related investments.

Bonds

The essence of sustainable fixed income investing is lending money to corporations, municipalities, and developers overseeing projects that accelerate progress in sustainable development.



Financial motivations can be aligned with ambitions ranging from tackling climate change to a personal sense of duty to the community to creating a legacy to aligning intergenerational passion for a particular cause.

The essence of sustainable fixed income investing is lending money to corporations, municipalities, and developers overseeing projects that accelerate progress in sustainable development. When it comes to investing in sustainable bonds, the intention and clear use of proceeds are crucial for ensuring that the funds raised are used to achieve specific environmental and social objectives. By adhering to various principles, such as Green Bond Principles and Social Bond Principles, issuers should provide transparency on the use of proceeds and impact of the funded activities. It represents one of several sustainable investment pathways that allow clients to shift portfolio focus from purely risk-adjusted returns to double or triple bottom-line outcomes. These outcomes include financial returns alongside measurable social and/or environmental impact.

Whatever the motivation may be, investors can contribute to progress given their ability and willingness to lend to sustainability driven ventures or projects. It is worth noting that in certain instances, investment capital can be catalytic, both in terms of impact as well as motivating others through its influence and encouraging more issuers to offer sustainable finance options, creating a ripple effect.



Looking ahead

As we look ahead, sustainable investing will continue to evolve, driven by investor awareness, regulatory changes, and innovation. ESG factors are becoming integral to investment management, particularly as the risks of climate change, cybersecurity, and labor practices are set to have increasing impact on financial performance. Emerging sustainability and climate reporting standards promote transparency and accountability globally. As stakes rise, the risk of ignoring sustainability grows. Simultaneously, long-term trends offer compelling wealth-building opportunities.

At Citi Wealth, we offer compelling opportunities to achieve your financial and sustainability objectives — and can help you contribute to issues that are important to you and your legacy. Please contact your financial representative to learn more.



IMPORTANT INFORMATION

In any instance where distribution of this communication (“Communication”) is subject to the rules of the US Commodity Futures Trading Commission (“CFTC”), this communication constitutes an invitation to consider entering into a derivatives transaction under US CFTC Regulations §§ 1.71 and 23.605, where applicable, but is not a binding offer to buy/sell any financial instrument.

This Communication is prepared by Citi Wealth Investments (“CWI”) which is comprised of the investments and capital markets capabilities that are provided to Citi Private Bank, Citi Global Wealth at Work, Citi Personal Wealth Management and Citi Personal Investments International (CPII).

Citi Private Bank, Citi Global Wealth at Work, Citi Personal Wealth Management, and Citi Personal Investments International, are businesses of Citigroup Inc. (“Citigroup”), which provide clients access to a broad array of products and services available through bank and non-bank affiliates of Citigroup. Not all products and services are provided by all affiliates or are available at all locations. In the U.S., investment products and services are provided by Citigroup Global Markets Inc. (“CGMI”), member FINRA and SIPC, Citi Private Alternatives, LLC (“CPA”), member FINRA and SIPC, and Citi Global Alternatives, LLC (“CGA”). CPA acts as distributor of certain alternative investment products to certain eligible clients’ segments. CGMI accounts are carried by Pershing LLC, member FINRA, NYSE, SIPC. Investment management services (including portfolio management) are available through CGMI, CGA, Citibank, N.A. and other affiliated advisory businesses. Insurance is offered by Citi Personal Wealth Management through Citigroup Life Agency LLC (“CLA”). In California, CLA does business as Citigroup Life Insurance Agency, LLC (license number OG56746). CGMI, CPA, CGA, CLA and Citibank, N.A. are affiliated companies under the common control of Citigroup.

Outside the U.S., investment products and services are provided by other Citigroup affiliates. Investment Management services (including portfolio management) are available through CGMI, CGA, Citibank, N.A. and other affiliated advisory businesses. These Citigroup affiliates, including CGA, will be compensated for the respective investment management, advisory, administrative, distribution and placement services they may provide.

CWI personnel are not research analysts, and the information in this Communication is not intended to constitute “research,” as that term is defined by applicable regulations. Unless otherwise indicated, any reference to a research report or research recommendation is not intended to represent the whole report and is not in itself considered a recommendation or research report.

This Communication is provided for information and discussion purposes only, at the recipient’s request. The recipient should notify CWI immediately should it at any time wish to cease being provided with such information. Unless otherwise indicated, (i) it does not constitute an offer or recommendation to purchase or sell any security, financial instrument or other product or service, or to attract any funding or deposits, and (ii) it does not constitute a solicitation if it is not subject to the rules of the CFTC (but see discussion above regarding communication subject to CFTC rules) and (iii) it is not intended as an official confirmation of any transaction.

Unless otherwise expressly indicated, this Communication does not take into account the investment objectives, risk profile or financial situation of any particular person and as such, investments mentioned in this document may not be suitable for all investors. Citi is not acting as an investment or other advisor, fiduciary or agent. The information contained herein is not intended to be an exhaustive discussion of the strategies or concepts mentioned herein or tax or legal advice. Recipients of this Communication should obtain advice based on their own individual circumstances from their own tax, financial, legal, and other advisors about the risks and merits of any transaction before making an investment decision and only make such decisions on the basis of their own objectives, experience, risk profile and resources.

The information contained in this Communication is based on generally available information and, although obtained from sources believed by Citi to be reliable, its accuracy and completeness cannot be assured, and such information may be incomplete or condensed. Any assumptions or information contained in this Communication constitute a judgment only as of the date of this document or on any specified dates and is subject to change without notice. Insofar as this Communication may contain historical and forward-looking information, past performance is neither a guarantee nor an indication of future results, and future results may not meet expectations due to a variety of economic, market and other factors. Further, any projections of potential risk or return are illustrative and should not be taken as limitations of the maximum possible loss or gain. Any prices, values or estimates provided in this Communication (other than those that are identified as being historical) are indicative only, may change without notice and do not represent firm quotes as to either price or size, nor reflect the value Citi may assign a security in its inventory. Forward-looking information does not indicate a level at which Citi is prepared to do a trade and may not account for all relevant assumptions and future conditions. Actual conditions may vary substantially from estimates which could have a negative impact on the value of an instrument.

Views, opinions and estimates expressed herein may differ from the opinions expressed by other Citi businesses or affiliates and are not intended to be a forecast of future events, a guarantee of future results, or investment advice, and are subject to change without notice based on market and other conditions. Citi is under no duty to update this document and accepts no liability for any loss (whether direct, indirect or consequential) that may arise from any use of the information contained in or derived from this Communication.

None of the financial instruments or other products mentioned in this Communication (unless expressly stated otherwise) is (i) insured by the Federal Deposit Insurance Corporation or any other governmental authority, or (ii) deposits or other obligations of, or guaranteed by Citi or any other insured depository institution.

Citi often acts as an issuer of financial instruments and other products, acts as a market maker and trades as principal in many different financial instruments and other products, and can be expected to perform or seek to perform investment banking and other services for the issuer of such financial instruments or other products. The author of this Communication may have discussed the information contained therein with others within or outside

Citi, and the author and/or such other Citi personnel may have already acted on the basis of this information (including by trading for Citi's proprietary accounts or communicating the information contained herein to other customers of Citi). Citi, Citi's personnel (including those with whom the author may have consulted in the preparation of this communication), and other customers of Citi may be long or short the financial instruments or other products referred to in this Communication, may have acquired such positions at prices and market conditions that are no longer available, and may have interests different from or adverse to your interests.

Citi and its employees are not in the business of providing, and do not provide, tax or legal advice to any taxpayer outside Citi. Any statement in this Communication regarding tax matters is not intended or written to be used, and cannot be used or relied upon, by any taxpayer for the purpose of avoiding tax penalties. Any such taxpayer should seek advice based on the taxpayer's particular circumstances from an independent tax advisor.

Neither Citi nor any of its affiliates can accept responsibility for the tax treatment of any investment product, whether or not the investment is purchased by a trust or company administered by an affiliate of Citi. Citi assumes that, before making any commitment to invest, the investor and (where applicable, its beneficial owners) have taken whatever tax, legal or other advice the investor/beneficial owners consider necessary and have arranged to account for any tax lawfully due on the income or gains arising from any investment product provided by Citi.

This Communication is for the sole and exclusive use of the intended recipients and may contain information proprietary to Citi which may not be reproduced or circulated in whole or in part without Citi's prior consent. The manner of circulation and distribution may be restricted by law or regulation in certain countries. Persons who come into possession of this document are required to inform themselves of, and to observe such restrictions. Citi accepts no liability whatsoever for the actions of third parties in this respect. Any unauthorized use, duplication, or disclosure of this document is prohibited by law and may result in prosecution.

Other businesses within Citigroup Inc. and affiliates of Citigroup Inc. may give advice, make recommendations, and take action in the interest of their clients, or for their own accounts, that may differ from the views expressed in this document. All expressions of opinion are current as of the date of this document and are subject to change without notice. Citigroup Inc. is not obligated to provide updates or changes to the information contained in this document.

The expressions of opinion are not intended to be a forecast of future events or a guarantee of future results. Past performance is not a guarantee of future results. Real results may vary.

Although information in this document has been obtained from sources believed to be reliable, Citigroup Inc. and its affiliates do not guarantee its accuracy or completeness and accept no liability for any direct or consequential losses arising from its use. Throughout this publication where charts indicate that a third party (parties) is the source, please note that the attributed may refer to the raw data received from such parties. No part of this document may be copied, photocopied or duplicated in any form or by any means, or distributed to any person that is not an employee, officer, director, or authorized agent of the recipient without Citigroup Inc.'s prior written consent.

Citigroup Inc. may act as principal for its own account or as agent for another person in connection with transactions placed by Citigroup Inc. for its clients involving securities that are the subject of this document or future editions of the document.

RISKS

Investments in financial instruments or other products carry significant risk, including the possible loss of the principal amount invested. Financial instruments or other products denominated in a foreign currency are subject to exchange rate fluctuations, which may have an adverse effect on the price or value of an investment in such products. This Communication does not purport to identify all risks or material considerations which may be associated with entering into any transaction.

Structured products can be highly illiquid and are not suitable for all investors. Additional information can be found in the disclosure documents of the issuer for each respective structured product described herein. Investing in structured products is intended only for experienced and sophisticated investors who are willing and able to bear the high economic risks of such an investment. Investors should carefully review and consider potential risks before investing.

OTC derivative transactions involve risk and are not suitable for all investors. Investment products are not insured, carry no bank or government guarantee, and may lose value. Before entering into these transactions, you should: (i) ensure that you have obtained and considered relevant information from independent reliable sources concerning the financial, economic and political conditions of the relevant markets; (ii) determine that you have the necessary knowledge, sophistication and experience in financial, business and investment matters to be able to evaluate the risks involved, and that you are financially able to bear such risks; and (iii) determine, having considered the foregoing points, that capital markets transactions are suitable and appropriate for your financial, tax, business and investment objectives.

This material may mention options regulated by the US Securities and Exchange Commission. Before buying or selling options you should obtain and review the current version of the [Options Clearing Corporation booklet by clicking this link](#), Characteristics and Risks of Standardized Options. A copy of the booklet can be obtained upon request from Citigroup Global Markets Inc., 390 Greenwich Street, 3rd Floor, New York, NY 10013.

If you buy options, the maximum loss is the premium. If you sell put options, the risk is the entire notional below the strike. If you sell call options, the risk is unlimited. The actual profit or loss from any trade will depend on the price at which the trades are executed. The prices used herein are historical

and may not be available when your order is entered. Commissions and other transaction costs are not considered in these examples. Option trades in general and these trades in particular may not be appropriate for every investor. Unless noted otherwise, the source of all graphs and tables in this report is Citi. Because of the importance of tax considerations to all option transactions, the investor considering options should consult with his/her tax advisor as to how their tax situation is affected by the outcome of contemplated options transactions.

Bonds are affected by a number of risks, including fluctuations in interest rates, credit risk and prepayment risk. In general, as prevailing interest rates rise, fixed income securities prices will fall. Bonds face credit risk if a decline in an issuer's credit rating, or creditworthiness, causes a bond's price to decline. High yield bonds are subject to additional risks such as increased risk of default and greater volatility because of the lower credit quality of the issues. Finally, bonds can be subject to prepayment risk. When interest rates fall, an issuer may choose to borrow money at a lower interest rate, while paying off its previously issued bonds. As a consequence, underlying bonds will lose the interest payments from the investment and will be forced to reinvest in a market where prevailing interest rates are lower than when the initial investment was made.

Bond rating equivalence

Alpha and/or numeric symbols used to give indications of relative credit quality. In the municipal market, these designations are published by the rating services. Internal rating are also used by other market participants to indicate credit quality.

Bond credit quality ratings	Rating agencies		
	Moody's ¹	Standard and Poor's ²	Fitch Rating ²
Credit risk			
Investment Grade			
Highest quality	Aaa	AAA	AAA
High quality (very strong)	Aa	AA	AA
Upper medium grade (Strong)	A	A	A
Medium grade	Baa	BBB	BBB
Not Investment Grade			
Lower medium grade (somewhat speculative)	Ba	BB	BB
Low grade (speculative)	B	B	B
Poor quality (may default)	Caa	CCC	CCC
Most speculative	Ca	CC	CC
No interest being paid or bankruptcy petition filed	C	D	C
In default	C	D	D

¹ The ratings from Aa to Ca by Moody's may be modified by the addition of a 1, 2, or 3, to show relative standing within the category.

² The rating from AA to CC by Standard and Poor's and Fitch Ratings may be modified by the addition of a plus or a minus to show relative standings within the category.

(MLP's) - Energy Related MLPs May Exhibit High Volatility. While not historically very volatile, in certain market environments Energy Related MLPS may exhibit high volatility.

Changes in Regulatory or Tax Treatment of Energy Related MLPs. If the IRS changes the current tax treatment of the master limited partnerships included in the Basket of Energy Related MLPs thereby subjecting them to higher rates of taxation, or if other regulatory authorities enact regulations which negatively affect the ability of the master limited partnerships to generate income or distribute dividends to holders of common units, the return on the Notes, if any, could be dramatically reduced. Investment in a basket of Energy Related MLPs may expose the investor to concentration risk due to industry, geographical, political, and regulatory concentration.

Mortgage-backed securities ("MBS"), which include collateralized mortgage obligations ("CMOs"), also referred to as real estate mortgage investment conduits ("REMICs"), may not be suitable for all investors. There is the possibility of early return of principal due to mortgage prepayments, which can reduce expected yield and result in reinvestment risk. Conversely, return of principal may be slower than initial prepayment speed assumptions, extending the average life of the security up to its listed maturity date (also referred to as extension risk).

Additionally, the underlying collateral supporting non-Agency MBS may default on principal and interest payments. In certain cases, this could cause the income stream of the security to decline and result in loss of principal. Further, an insufficient level of credit support may result in a downgrade of a mortgage bond's credit rating and lead to a higher probability of principal loss and increased price volatility. Investments in subordinated MBS involve greater credit risk of default than the senior classes of the same issue. Default risk may be pronounced in cases where the MBS security is secured by, or evidencing an interest in, a relatively small or less diverse pool of underlying mortgage loans.

MBS are also sensitive to interest rate changes which can negatively impact the market value of the security. During times of heightened volatility, MBS can experience greater levels of illiquidity and larger price movements. Price volatility may also occur from other factors including, but not limited to, prepayments, future prepayment expectations, credit concerns, underlying collateral performance and technical changes in the market.

An investment in alternative investments can be highly illiquid, is speculative and not suitable for all investors. Investing in alternative investments is for experienced and sophisticated investors who are willing to bear the high economic risks associated with such an investment. Investors should carefully review and consider potential risks before investing. Certain of these risks may include:

- loss of all or a substantial portion of the investment due to leveraging, short-selling, or other speculative practices;
- lack of liquidity in that there may be no secondary market for the fund and none is expected to develop;
- volatility of returns;
- restrictions on transferring interests in the Fund;
- potential lack of diversification and resulting higher risk due to concentration of trading authority when a single advisor is utilized;
- absence of information regarding valuations and pricing;
- complex tax structures and delays in tax reporting;
- less regulation and higher fees than mutual funds; and
- manager risk.

Individual funds will have specific risks related to their investment programs that will vary from fund to fund.

Asset allocation does not assure a profit or protect against a loss in declining financial markets.

Diversification does not guarantee a profit or protect against loss. Different asset classes present different risks.

The indexes are unmanaged. An investor cannot invest directly in an index. They are shown for illustrative purposes only and do not represent the performance of any specific investment. Index returns do not include any expenses, fees or sales charges, which would lower performance.

Past performance is no guarantee of future results.

International investing entails greater risk, as well as greater potential rewards compared to US investing. These risks include political and economic uncertainties of foreign countries as well as the risk of currency fluctuations. These risks are magnified in countries with emerging markets, since these countries may have relatively unstable governments and less established markets and economics.

Investing in smaller companies involves greater risks not associated with investing in more established companies, such as business risk, significant stock price fluctuations and illiquidity.

Factors affecting commodities generally, index components composed of futures contracts on nickel or copper, which are industrial metals, may be subject to a number of additional factors specific to industrial metals that might cause price volatility. These include changes in the level of industrial activity using industrial metals (including the availability of substitutes such as manmade or synthetic substitutes); disruptions in the supply chain, from mining to storage to smelting or refining; adjustments to inventory; variations in production costs, including storage, labor and energy costs; costs associated with regulatory compliance, including environmental regulations; and changes in industrial, government and consumer demand, both in individual consuming nations and internationally. Index components concentrated in futures contracts on agricultural products, including grains, may be subject to a number of additional factors specific to agricultural products that might cause price volatility. These include weather conditions, including floods, drought and freezing conditions; changes in government policies; planting decisions; and changes in demand for agricultural products, both with end users and as inputs into various industries.

The information contained herein is not intended to be an exhaustive discussion of the risks, strategies or concepts mentioned herein or tax or legal advice. Readers interested in the strategies or concepts should consult their tax, legal, or other advisors, as appropriate.

Environmental, Social and Governance (ESG) and sustainable investing may limit the type and number of investment opportunities, and, as a result may affect performance relative to other approaches that do not impose similar sustainability criteria. Sustainable investment products are subject to availability. Certain sustainable investment opportunities may not be available in all regions or not available at all. No guarantee is provided regarding the financial or sustainability performance of such products and the products may not meet their investment or sustainability objectives.

There is currently no globally accepted framework or definition (legal, regulatory or otherwise) nor market consensus as to what constitutes, an “ESG”, “sustainable”, “impact” or an equivalently labelled product, or regarding what precise attributes are required for a particular investment, product or asset to be defined as such. Different persons may arrive at varied conclusions when evaluating the sustainability attributes of a product or any of its underlying investments. Certain jurisdictional laws and regulations require classifications of investment products against their own sustainability definitions and as such there is likely to be a degree of divergence as to the meaning of such terms. For example, the term “sustainable investing” where used in this disclosure is by reference to CWI’s internal framework rather than any defined meaning under jurisdictional laws and regulations. There is no guarantee that investing in these products will have a sustainability impact.

There are numerous ESG data providers that evaluate companies on their ESG performance and provide reports, ratings, and benchmarks. Report, rating and benchmark methodology, scope, and coverage, vary greatly among providers. ESG data may not be available for all companies, securities, or

geographies and as such, may not necessarily be reliable or complete. Such data will also be subject to various limitations, including (inter alia): i) limitations in the third-party data provider's methodologies; ii) data lags, data coverage gaps or other issues impacting the quality of the data; iii) the fact that there are divergent views, approaches, methodologies and disclosure standards in the market, including among data providers, with respect to the identification, assessment, disclosure or determination of "ESG" factors or indicators and which precise attributes are required for a particular investment, product or asset to be defined as such; iv) the fact that ESG information, including where obtained from third-party data providers, may be based on qualitative or subjective assessment, and any one data source may not in itself represent a complete 'picture' for the ESG metric that it represents; v) the fact that such data may be subject to change without any notice of this to CWI by the third-party data provider or other source. Furthermore, some of the data CWI obtains from third-party providers is not obtained directly from investee companies, but rather represents estimated / proxy data that the third-party data provider has prepared using its own proprietary methodologies (e.g. because there is no actual investee company data). Such proprietary methodologies are also subject to various limitations of their own, acknowledging that estimates / proxies are in and of themselves an inexact science. CWI does not make any representation or warranty as to the completeness or accuracy of any such third-party data (whether actual or estimated), or of data that is generated using this third-party data. CWI shall have no liability for any errors or omissions in the information where such information has been obtained from third parties or not.

CITI PRIVATE BANK MARKET SPECIFIC DISCLOSURES

Citibank, N.A., Hong Kong / Singapore organized under the laws of U.S.A. with limited liability. This communication is distributed in Hong Kong by Citi Private Bank operating through Citibank N.A., Hong Kong Branch, which is registered in Hong Kong with the Securities and Futures Commission for Type 1 (dealing in securities), Type 4 (advising on securities), Type 6 (advising on corporate finance) and Type 9 (asset management) regulated activities with CE No: (AAP937) or in Singapore by Citi Private Bank operating through Citibank, N.A., Singapore Branch which is regulated by the Monetary Authority of Singapore. Any questions in connection with the contents in this communication should be directed to registered or licensed representatives of the relevant aforementioned entity. The contents of this communication have not been reviewed by any regulatory authority in Hong Kong or any regulatory authority in Singapore. This communication contains confidential and proprietary information and is intended only for recipient in accordance with accredited investors requirements in Singapore (as defined under the Securities and Futures Act (Chapter 289 of Singapore) (the "Act") and professional investors requirements in Hong Kong (as defined under the Hong Kong Securities and Futures Ordinance and its subsidiary legislation). For regulated asset management services, any mandate will be entered into only with Citibank, N.A., Hong Kong Branch and/or Citibank, N.A. Singapore Branch, as applicable. Citibank, N.A., Hong Kong Branch or Citibank, N.A., Singapore Branch may sub-delegate all or part of its mandate to another Citigroup affiliate or other branch of Citibank, N.A.. Any references to named portfolio managers are for your information only, and this communication shall not be construed to be an offer to enter into any portfolio management mandate with any other Citigroup affiliate or other branch of Citibank, N.A. and, at no time will any other Citigroup affiliate or other branch of Citibank, N.A. or any other Citigroup affiliate enter into a mandate relating to the above portfolio with you. To the extent this communication is provided to clients who are booked and/or managed in Hong Kong: No other statement(s) in this communication shall operate to remove, exclude or restrict any of your rights or obligations of Citibank under applicable laws and regulations. Citibank, N.A., Hong Kong Branch does not intend to rely on any provisions herein which are inconsistent with its obligations under the Code of Conduct for Persons Licensed by or Registered with the Securities and Futures Commission, or which mis-describes the actual services to be provided to you.

Citibank, N.A. is incorporated in the United States of America and its principal regulators are the US Office of the Comptroller of Currency and Federal Reserve under US laws, which differ from Australian laws. Citibank, N.A. does not hold an Australian Financial Services License under the Corporations Act 2001 as it enjoys the benefit of an exemption under ASIC Class Order CO 03/1101 (remade as ASIC Corporations (Repeal and Transitional) Instrument 2016/396 and extended by ASIC Corporations (Amendment) Instrument 2024/497).

In the United Kingdom, Citibank N.A., London Branch (registered branch number BR001018), Citigroup Centre, Canada Square, Canary Wharf, London, E14 5LB, is authorized and regulated by the Office of the Comptroller of the Currency (USA) and authorized by the Prudential Regulation Authority. Subject to regulation by the Financial Conduct Authority and limited regulation by the Prudential Regulation Authority. Details about the extent of our regulation by the Prudential Regulation Authority are available from us on request. The contact number for Citibank N.A., London Branch is +44 (0)20 7508 8000.

Citibank Europe plc (UK Branch) is a branch of Citibank Europe plc, which is authorised and regulated by the Central Bank of Ireland and the European Central Bank. Authorised by the Prudential Regulation Authority. Subject to regulation by the Financial Conduct Authority and limited regulation by the Prudential Regulation Authority. Details about the extent of our regulation by the Prudential Regulation Authority are available from us on request. Citibank Europe plc, UK Branch is registered as a branch in the register of companies for England and Wales with registered branch number BR017844. Its registered address is Citigroup Centre, Canada Square, Canary Wharf, London E14 5LB. VAT No.: GB 429 6256 29. Citibank Europe plc is registered in Ireland with number 132781, with its registered office at 1 North Wall Quay, Dublin 1. Citibank Europe plc is regulated by the Central Bank of Ireland. Ultimately owned by Citigroup Inc., New York, USA.

Citibank Europe plc, Luxembourg Branch, registered with the Luxembourg Trade and Companies Register under number B 200204, is a branch of Citibank Europe plc. It is subject to the joint supervision of the European Central bank and the Central Bank of Ireland. It is furthermore subject to limited regulation by the Commission de Surveillance du Secteur Financier (the CSSF) in its role as host Member State authority and registered with the CSSF under number B00000395. Its business office is at 31, Z.A. Bourmicht, 8070 Bertrange, Grand Duchy of Luxembourg. Citibank Europe plc is registered in Ireland with company registration number 132781. It is regulated by the Central Bank of Ireland under the reference number C26553 and supervised by the European Central Bank. Its registered office is at 1 North Wall Quay, Dublin 1, Ireland.

This document is communicated by Citibank (Switzerland) AG, which has its registered address at Hardstrasse 201, 8005 Zurich, Citibank N.A., Zurich Branch, which has its registered address at Hardstrasse 201, 8005 Zurich, or Citibank N.A., Geneva Branch, which has its registered address at 2, Quai

de la Poste, 1204 Geneva. Citibank (Switzerland) AG and Citibank, N.A., Zurich and Geneva Branches are authorised and supervised by the Swiss Financial Supervisory Authority (FINMA).

In Jersey, this document is communicated by Citibank N.A., Jersey Branch which has its registered address at PO Box 104, 38 Esplanade, St Helier, Jersey JE4 8QB. Citibank, N.A., Jersey Branch is regulated by the Jersey Financial Services Commission. Citibank N.A. Jersey Branch is a participant in the Jersey Bank Depositors Compensation Scheme. The Scheme offers protection for eligible deposits of up to £50,000. The maximum total amount of compensation is capped at £100,000,000 in any 5-year period. Full details of the Scheme and banking groups covered are available on the States of Jersey website www.gov.je/dcs, or on request.

Citi may offer, issue, distribute or provide other services in relation to certain unsecured financial instruments issued or entered into by BRRD Entities (i.e., EU entities within the scope of Directive 2014/59/EU (the BRRD), including EU credit institutions, certain EU investment firms and / or their EU subsidiaries or parents) (BRRD Financial Instruments).

In various jurisdictions (including, without limitation, the European Union and the United States) national authorities have certain powers to manage and resolve banks, broker dealers and other financial institutions (including, but not limited to, Citi) when they are failing or likely to fail. There is a risk that the use, or anticipated use, of such powers, or the manner in which they are exercised, may materially adversely affect (i) your rights under certain types of unsecured financial instruments (including, without limitation, BRRD Financial Instruments), (ii) the value, volatility or liquidity of certain unsecured financial instruments (including, without limitation, BRRD Financial Instruments) that you hold and / or (iii) the ability of an institution (including, without limitation, a BRRD Entity) to satisfy any liabilities or obligations it has to you. In the event of resolution, the value of BRRD Financial Instruments may be reduced to zero and or liabilities may be converted into ordinary shares or other instruments of ownership for the purposes of stabilisation and loss absorption. The terms of existing BRRD Financial Instruments (e.g., date of maturity or interest rates payable) could be altered and payments could be suspended.

There can be no assurance that the use of any BRRD resolution tools or powers by the BRRD Resolution Authority or the manner in which they are exercised will not materially adversely affect your rights as a holder of BRRD Financial Instruments, the market value of any investment you may have in BRRD Financial Instruments and/or a BRRD Entity's ability to satisfy any liabilities or obligations it has to you. You may have a right to compensation from the relevant authorities if the exercise of such resolution powers results in less favourable treatment for you than the treatment that you would have received under normal insolvency proceedings. By accepting any services from Citi, you confirm that you are aware of these risks.

Canada: Citi Private Bank is a business of Citigroup Inc. ("Citigroup"), which provides its clients access to a broad array of products and services available through bank and non-bank affiliates of Citigroup. Not all products and services are provided by all affiliates or are available at all locations.

In Canada, Citi Private Bank is a division of Citibank Canada, a Schedule II Canadian chartered bank. References herein to Citi Private Bank and its activities in Canada relate solely to Citibank Canada and do not refer to any affiliates or subsidiaries of Citibank Canada operating in Canada. Certain investment products are made available through Citibank Canada Investment Funds Limited ("CCIFL"), a wholly owned subsidiary of Citibank Canada. Investment Products are subject to investment risk, including possible loss of principal amount invested. Investment Products are not insured by the CDIC, FDIC or depository insurance regime of any jurisdiction and are not guaranteed by Citigroup or any affiliate thereof.

This document is for information purposes only and does not constitute an offer to sell or a solicitation of an offer to buy any securities to any person in any jurisdiction. The information set out herein may be subject to updating, completion, revision, verification and amendment and such information may change materially.

Citigroup, its affiliates and any of the officers, directors, employees, representatives or agents shall not be held liable for any direct, indirect, incidental, special, or consequential damages, including loss of profits, arising out of the use of information contained herein, including through errors whether caused by negligence or otherwise.

Citibank Canada Investment Funds Limited ("CCIFL") is not currently a member and does not intend to become a member of the Canadian Investment Regulatory Organization ("CIRO"); consequently, clients of CCIFL will not have available to them investor protection benefits that would otherwise derive from membership of CCIFL in the CIRO, including coverage under any investor protection plan for clients of members of the CIRO.

Bahrain: IN BAHRAIN, CITI PRIVATE BANK OPERATES UNDER SPECIFIC APPROVAL ISSUED ON THE BASIS OF CITIBANK, N.A., BAHRAIN BRANCH'S BANKING LICENSE

Marketing and distribution of Investment Funds to clients in Bahrain requires Notification to the Central Bank of Bahrain and will be limited to UHNWI as defined below. Minimum investment subscription criteria will apply for products for all subscriptions for Bahrain domiciled clients.

Ultra-high net worth investors are:

- (a) Individuals who have a minimum net worth (or joint net worth with their spouse) of USD 25 million or more
- (b) Companies, partnerships, trusts or other commercial undertakings, which have financial assets available for investment of not less than USD 25 million; or
- (c) Governments, supranational organisations, central banks or other national monetary authorities, and state organisations whose main activity is to invest in financial instruments (such as state pension funds).

Israel: This communication is directed at persons who are "Eligible Clients" as such term is defined in the Israeli Regulation of Investment Advice, Investment Marketing, and Investment Portfolio Management law, 1995 (the "Advisory Law"). This communication is not intended for retail clients and Citi will not make such products or transactions available to retail clients. The presenter is not licensed as investment advisor by the Israeli Securities Authority ("ISA"). The information contained herein may relate to matters that are not regulated by the ISA. Any securities which are the subject of this communication may not be offered or sold to any Israeli person except pursuant to an exemption from the Israeli public offering rules.

UAE: In the UAE, Citibank N.A. UAE Branch is licensed by the Central Bank of the UAE as a branch of a foreign bank.

The private banking business operates under Citibank N.A. UAE branch which is licensed with UAE Securities and Commodities Authority ("SCA") to undertake the financial activity of A) promotion under license number 2020000097 B) Trading broker in international markets under license number 20200000198.

Mutual funds distributed by Citibank N.A. UAE private banking business are registered with SCA.

The approval of SCA, in relation to the promotion of the investment products in the U.A.E. does not constitute a recommendation by SCA. to purchase or invest in the respective investment products and SCA accepts no responsibility and shall not be held liable for the failure of any concerned parties to fulfil their obligations and duties in relation to the investment products or for the accuracy and integrity of the data contained in the relevant subscription prospectus.

CONSUMER, CITIGOLD AND CITIGOLD PRIVATE CLIENT SEGMENT MARKET SPECIFIC DISCLOSURES

Hong Kong: This communication is distributed in Hong Kong by Citibank (Hong Kong) Limited ("CHKL") and/or Citibank, N.A., Hong Kong Branch ("CBNA HK", Citibank, N.A. is organized under the laws of U.S.A. with limited liability). CHKL and CBNA HK provide no independent research or analysis in the substance or preparation of this communication. Although information in this communication has been obtained from sources believed to be reliable, CHKL and CBNA HK do not guarantee its accuracy or completeness and accept no liability for any direct or consequential losses arising from its use.

This communication is for general information only, is not intended as a recommendation or an offer or solicitation for the purchase or sale of any products or services and should not be relied upon as financial advice. The information herein has not taken account of the objectives, financial situation or needs of any particular investor. Any person considering an investment should consider the suitability of the investment having regard to their objectives, financial situation and needs, and should seek independent advice before making an investment decision. You should obtain and consider the relevant product terms and conditions and risk disclosure statement, and consider if it's suitable for your objectives, financial situation or needs before making any investment decision. Investors are advised to obtain independent legal, financial and taxation advice prior to investing. Investments are not deposits, are not protected by the Deposit Protection Scheme in Hong Kong and are subject to investment risk including the possible loss of the principal amount invested.

This communication does not constitute the distribution of any information in any jurisdiction in which it is unlawful to distribute such information to any person in such jurisdiction.

CHKL does not provide discretionary portfolio management services.

Singapore: This communication is distributed in Singapore by Citibank Singapore Limited ("CSL") to selected Citigold/Citigold Private Clients. CSL provides no independent research or analysis of the substance or in preparation of this communication. Please contact your Citigold/Citigold Private Client Relationship Manager in CSL if you have any queries on or any matters arising from or in connection with this communication. Investment products are not insured under the provisions of the Deposit Insurance and Policy Owners' Protection Schemes Act of Singapore and are not eligible for deposit insurance coverage under the Deposit Insurance Scheme.

This communication is for general information only and should not be relied upon as financial advice. The information herein has no regard to the specific objectives, financial situation and particular needs of any specific person and is not intended to be an exhaustive discussion of the strategies or concepts mentioned herein or tax or legal advice. Any person interested in the strategies or concepts mentioned herein should consult their independent tax, legal, financial or other advisors, as appropriate. This communication does not constitute the distribution of any information or the making of any offer or solicitation by anyone in any jurisdiction in which such distribution or offer is not authorized or to any person to whom it is unlawful to distribute such information or make any offer or solicitation.

Before making any investment, each investor must obtain the investment offering materials, which include a description of the risks, fees and expenses and the performance history, if any, which may be considered in connection with making an investment decision. Interested investors should seek the advice of their financial adviser about the issues discussed herein as appropriate. Should investors choose not to seek such advice, they should carefully consider the risks associated with the investment and make a determination based upon the investor's own particular circumstances, that the investment is consistent with the investor's investment objectives and assess whether the investment product is suitable for themselves. Although information in this document has been obtained from sources believed to be reliable, CSL does not guarantee its accuracy or completeness and accept no liability for any direct or consequential losses arising from its use.

CSL does not provide discretionary portfolio management services.

UAE: Citibank NA UAE is registered with Central Bank of UAE under license numbers BSD/504/83 for Al Wasl Branch Dubai, 13/184/2019 for Mall of the Emirates Branch Dubai, BSD/2819/9 for Sharjah Branch, and BSD/692/83 for Abu Dhabi Branch. Tel.: 04 311 4000. Citibank, N.A. - UAE Branch is licensed by the Central Bank of the UAE as a branch of a foreign bank.

Citibank N.A. UAE is licensed with UAE Securities and Commodities Authority ("SCA") to undertake the financial activity of A) promotion under license number 20200000097 B) Trading broker in international markets under license number 20200000198.

Investment products are not bank deposits or obligations or guaranteed by Citibank N.A., Citigroup Inc. or any of its affiliates or subsidiaries unless specifically stated. Investment products are not insured by government or governmental agencies. Investment and Treasury products are subject to investment risk, including possible loss of principal amount invested. Past performance is not indicative of future results: prices can go up or down. Investors investing in investments and/or treasury products denominated in foreign (non-local) currency should be aware of the risk of exchange rate fluctuations that may cause loss of principal when foreign currency is converted to the investors home currency. Investment and Treasury products are not available to U.S. persons. All applications for investments and treasury products are subject to Terms and Conditions of the individual investment and treasury products. Customer understands that it is his/her responsibility to seek legal and/or tax advice regarding the legal and tax consequences of his/her investment transactions. If customer changes residence, citizenship, nationality, or place of work, it is his/her responsibility to understand how his/her investment transactions are affected by such change and comply with all applicable laws and regulations as and when such becomes applicable. Customer understands that Citibank does not provide legal and/or tax advice and are not responsible for advising him/her on the laws pertaining to his/her transaction. Citibank UAE does not provide continuous monitoring of existing customer holdings.

Product Key Fact Statements and all other fees and charges are mentioned in the Schedule of Fees and Charges can be found on our website - www.citibank.ae.

Citibank UAE is a distributor of mutual funds which are managed by asset management companies who are our third-party product providers. We use UBS AG as an intermediary for execution and custody services to offer equities and bonds to our customers.

Mutual funds distributed by Citibank N.A. UAE Consumer Business are registered with SCA and structured notes distributed by Citibank N.A. UAE Consumer Business are approved by the Central Bank of UAE.

The approval of SCA, in relation to the promotion of the investment products in the U.A.E. does not constitute a recommendation by SCA. to purchase or invest in the respective investment products and SCA accepts no responsibility and shall not be held liable for the failure of any concerned parties to fulfil their obligations and duties in relation to the investment products or for the accuracy and integrity of the data contained in the relevant subscription prospectus.

The information provided herein does not constitute the marketing of any products or services to individuals resident in the European Union, European Economic Area, Switzerland, Guernsey, Jersey, Monaco, San Marino, Vatican, The Isle of Man, the UK, Data Privacy (GDPR, LGPD & NZPA)*

United Kingdom: This document is distributed in the U.K. by Citibank UK Limited and in Jersey by Citibank N.A., Jersey Branch.

Citibank UK Limited is authorised by the Prudential Regulation Authority and regulated by the Financial Conduct Authority and the Prudential Regulation Authority. Our firm's Financial Services Register number is 805574. Citibank UK Limited is a company limited by shares registered in England and Wales with registered address at Citigroup Centre, Canada Square, Canary Wharf, London E14 5LB, Companies House Registration No. 11283101.

Citibank N.A., Jersey Branch is regulated by the Jersey Financial Services Commission. Citi International Personal Bank is registered in Jersey as a business name of Citibank N.A. The address of Citibank N.A., Jersey Branch is P.O. Box 104, 38 Esplanade, St Helier, Jersey JE4 8QB. Citibank N.A. is incorporated with limited liability in the USA. Head office: 399 Park Avenue, New York, NY 10043, USA.

© 2025 Citigroup Inc., Citi, Citi and Arc Design and other marks used herein are service marks of Citigroup Inc. or its affiliates, used and registered throughout the world.